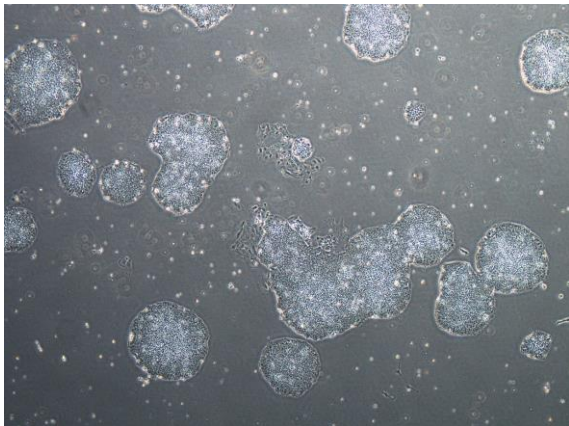
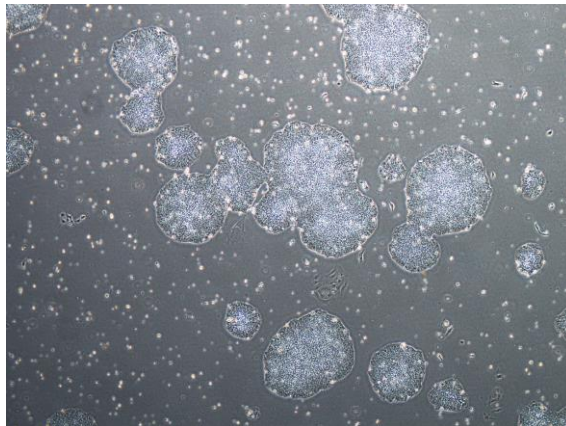


【 CiRA-j-1289 】 Morphology of iPSC colonies

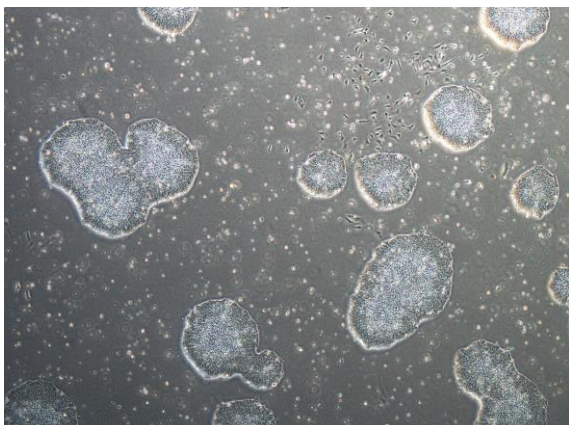
CiRA-j-1289-A: passage-2



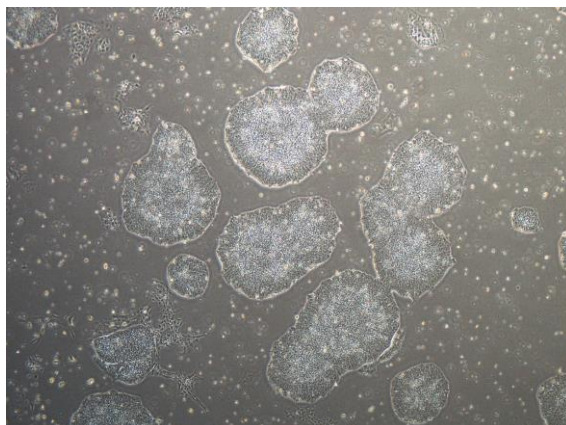
CiRA-j-1289-B: passage-2



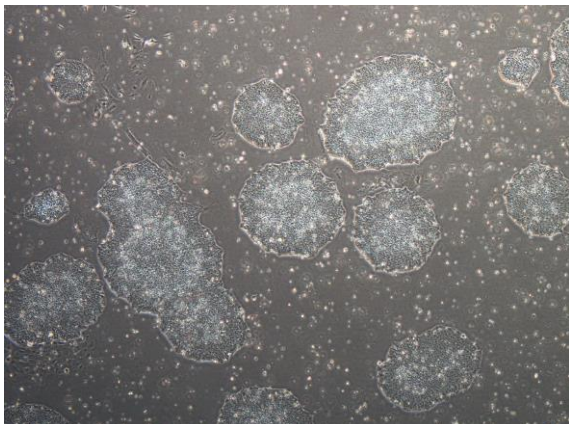
CiRA-j-1289-C: passage-2



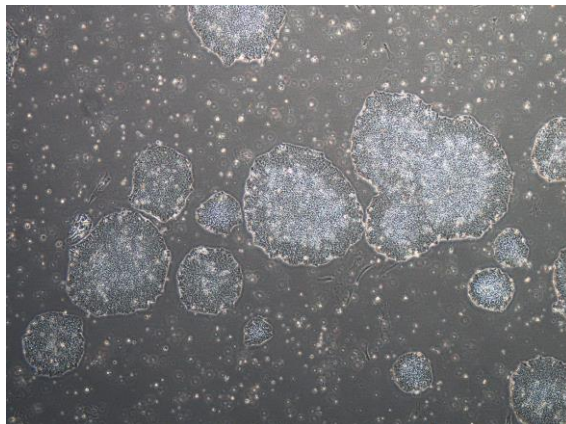
CiRA-j-1289-D: passage-2



CiRA-j-1289-E: passage-2



CiRA-j-1289-F: passage-2



(All images were captured at 4x magnification)